



OFFICE • FOR LEASE



275 COLBORNE STREET

London, ON N6B 2S7

ASKING LEASE RATE:
\$12.00 PSF NET

ADDITIONAL RENT:
\$3.90 PSF



PROPERTY HIGHLIGHTS

- **Building:** Approx. 5,750 SF of built out office space available
- **Zoning:** RSC 1,4
- **Additional Rent:** \$3.90 PSF (Est.)
- **Parking:** 32 stalls total available on-site
- **Signage:** Pylon signage available
- Located within walking distance to the downtown core
- Leasing incentives available to qualified tenants
- Broad zoning allows for a variety of commercial uses
- Various configurations available

ANDREW JOHNSON
Sales Representative
519 438 8639
andrew.johnson@cushwakeswo.com

GEORGE KERHOULAS
Sale Representative
519 931 2181
george.kerhoulas@cushwakeswo.com

CUSHMAN & WAKEFIELD
Southwestern Ontario
620A Richmond St, 2nd Floor
London, Ontario N6A 5J9
www.cushwakeswo.com

275 COLBORNE STREET

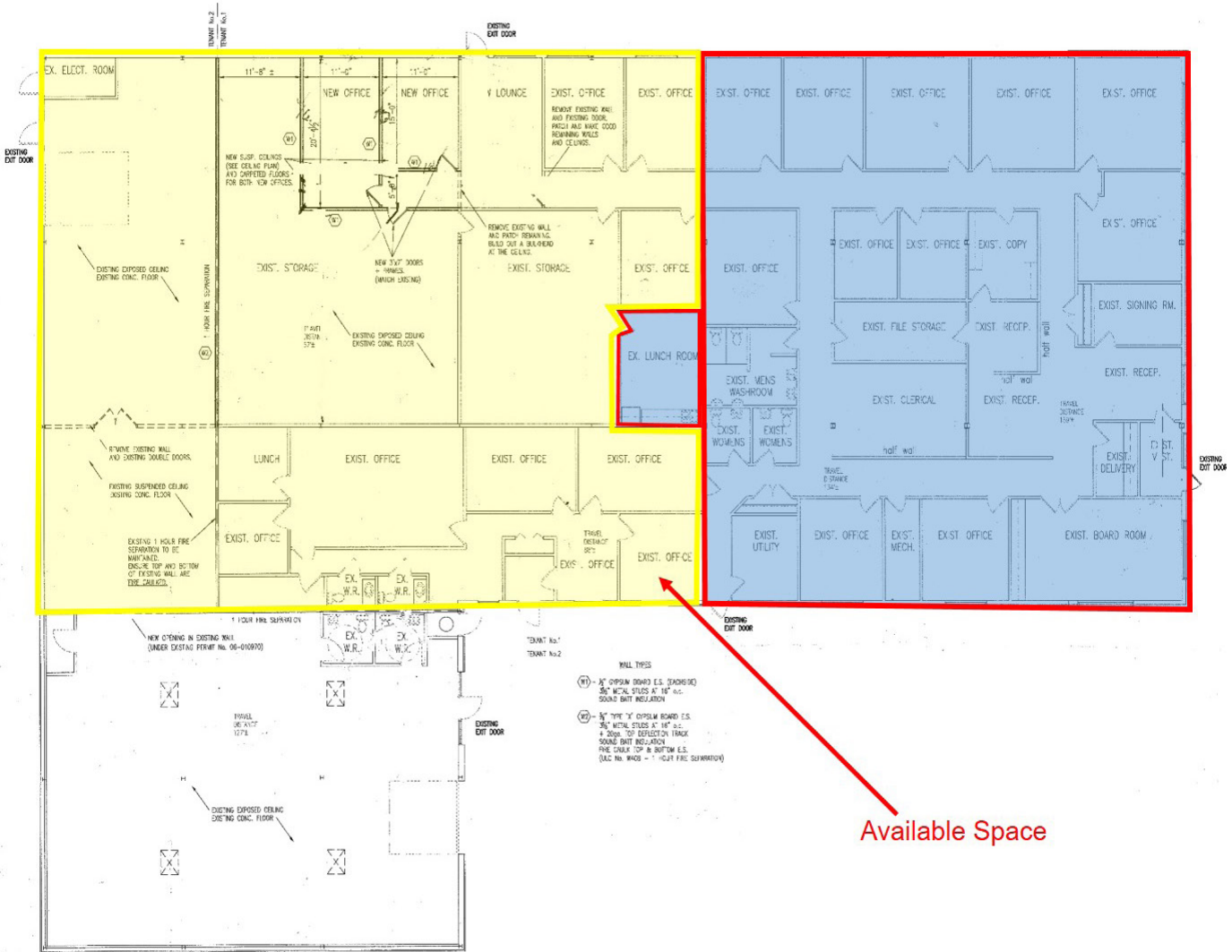
London, ON N6B 2S7

ASKING LEASE RATE:
\$12.00 PSF NET

ADDITIONAL RENT:
\$3.90 PSF



FLOOR PLAN



Available Space

ANDREW JOHNSON
Sales Representative
519 438 8639
andrew.johnson@cushwakeswo.com

GEORGE KERHOULAS
Sales Representative
519 931 2181
george.kerhoulas@cushwakeswo.com

CUSHMAN & WAKEFIELD
Southwestern Ontario
620A Richmond St, 2nd Floor
London, Ontario N6A 5J9
www.cushwakeswo.com